

IEC FABCHEM LIMITED

Cabinet Mounted Chlorinators Capacities Upto 200 Kg/Hr Model R-103

Model R-103 floor cabinet mounted chlorinators are vacuum operated, solution feed devices available with wall mounted remote vacuum regulator. The injector is floor mounted, away from the Chlorinator cabinet, which houses a Rotameter, a flow control valve, a differential regulator and a vacuum relief valve.

REMOTE VACUUM REGULATOR

Exclusively designed remote vacuum regulator is a vacuum-to-open and normally closed. It continuously monitors vacuum and regulates gas flow to a closely controlled valve. When located as close as possible to the source of gas supply, the risk of handling gas under pressure is reduced to a minimum.

INJECTOR

Capacities upto 40 Kg/hr of chlorine have a fixed throat. Capacities of 50 kg/hr chlorine and above are equipped with variable orifices, which may be achieved by a throttle valve on injector, so that water consumption may if necessary reduced to a minimum. Water passing through injector should reasonably clean.

INJECTORS ARE SELECTED TO CREATE VACUUM AND TO LIMIT CHLORINE SOLUTION STRENGTH TO 3500 ppm AT 25 C OR 2500 ppm AT 40 C AT HIGHER CONCENTRATIONS MOLECULAR CHLORINE BREAKS AND FUMES AT THE POINT OF APPLICATION, CAUSING INEFFICIENT MIXING OF CHLORINE.

FLOW METER

IEC Chlorinator Model R-103 have flow meters for a maximum capacity of 1,2,3,4,5,10,20,30,40,50,75,100, 150, 180 & 200 kg/hr of chlorine gas. Feed range is 20:1 for any flow meter. The flow meter has an accuracy of $\pm 4\%$ of the indicated flow. The float and packing are made of PTFE.

The system is provided with a check valve, vacuum relief valve, and emergency drain relief valve.

OPERATION

Water passes through the injector to produce vacuum. This vacuum opens the check valve and extends the vacuum upto remote vacuum regulator.

The chlorine supply under pressure is reduced to a constant vacuum at the remote vacuum regulator. The gas under vacuum passes through chlorine gas flow meter and flow control valve to differential regulator which maintains a constant vacuum differential. The chlorine solution is then discharged from the injector to the point of application.

PARTS LIST

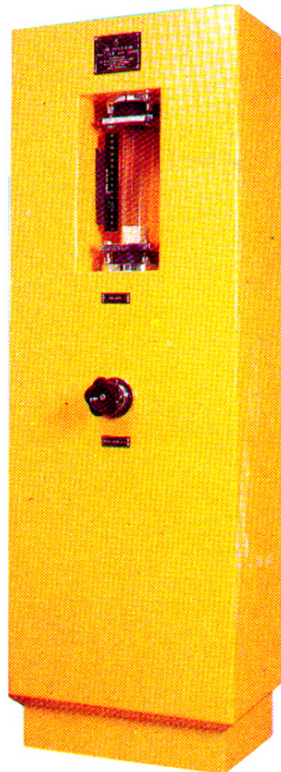
With Standard accessories

- One - Wall mounted remote vacuum regulator with diaphragm pressure gauge.
- One - Pressure relief valve
- One - Fibre glass floor mounted cabinet rear – open, for easy accessibility and service.
- One - Rotameter
- One - Flow Control Valve
- One - Differential Regulator
- One – Vacuum Relief Valve
- Req.- Inter Connecting Piping inside Chlorinator Cabinet
- One –Injector
- One –Check Valve and Emergency Drain Relief Valve Assembly.

OPTIONAL EXTRA

Not included unless specifically offered

- ◆ Vacuum gauge on injector vacuum line
- ◆ Vacuum switch for chlorine service
- ◆ Water Pressure gauge on injector water inlet
- ◆ Pressure switch for injector water supply
- ◆ Rubber lined diaphragm valve on injector solution outlet.



IEC FABCHEM LIMITED

#861A, 'J' Block, 15th Street, 13th Main Road, Anna Nagar (W), Chennai - 600 040, INDIA.

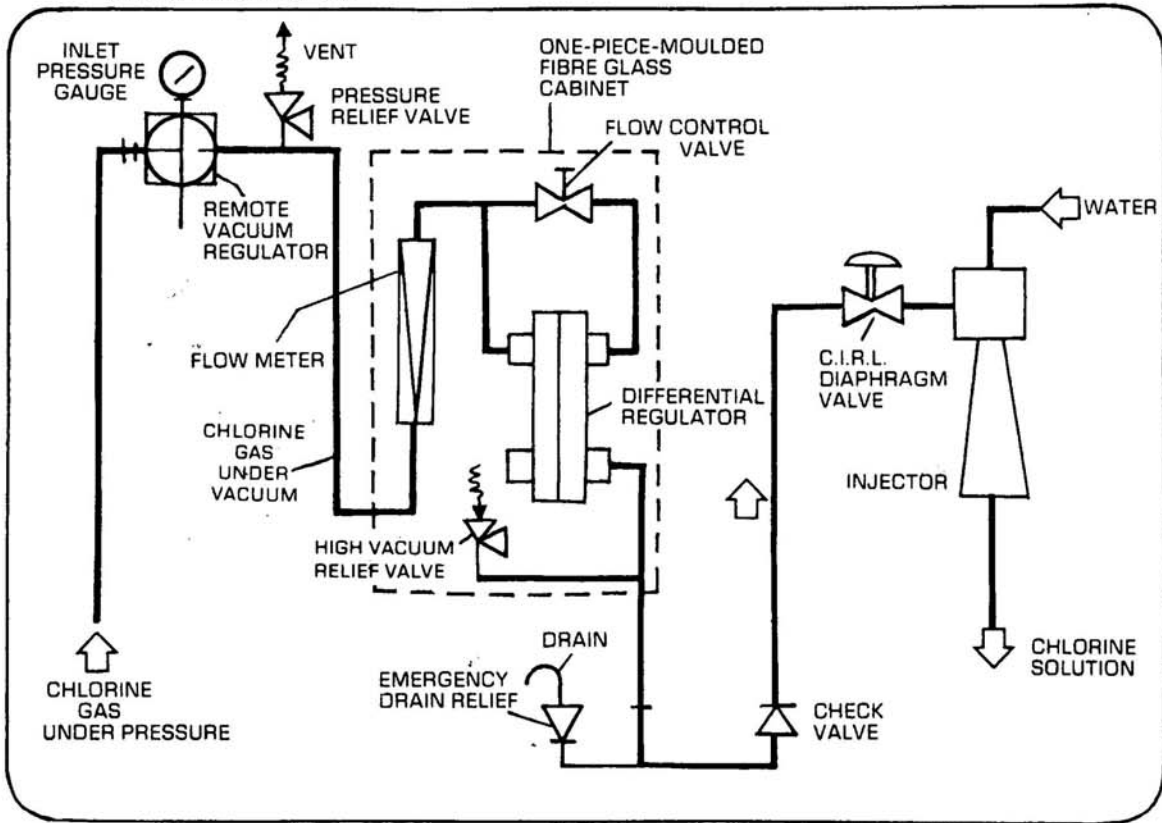
Phone: 044- 26160854, 26160354

Fax: 044-26160458

Email: iecfcl@eth.net

Website: www.iecfabchem.in

FLOW DIAGRAM



DIMENSIONS

A	B	C	E	F	D	G
500	330	1500	190	350	330	500

ALL CAPACITIES UP TO 200 Kgs/hr.

CHLORINATOR CAPACITIES AVAILABLE:

1, 2, 3, 4, 5, 10 Kgs/hr.
20, 30, 40, 50, 75, 100, 150, 180, 200 Kgs/hr

MAXIMUM LOAD FOR CHLORINATOR FOUNDATION

100 Kgs

PROJECT 25 mm ABOVE FOUNDATION

16 ϕ BOLT 150 mm long

